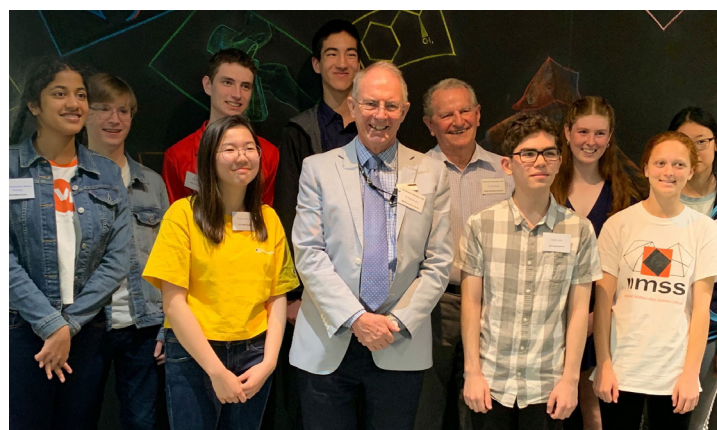
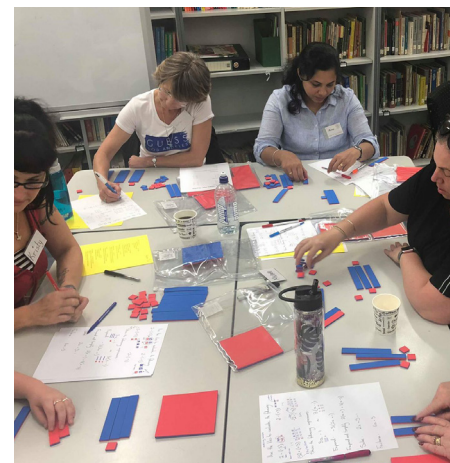
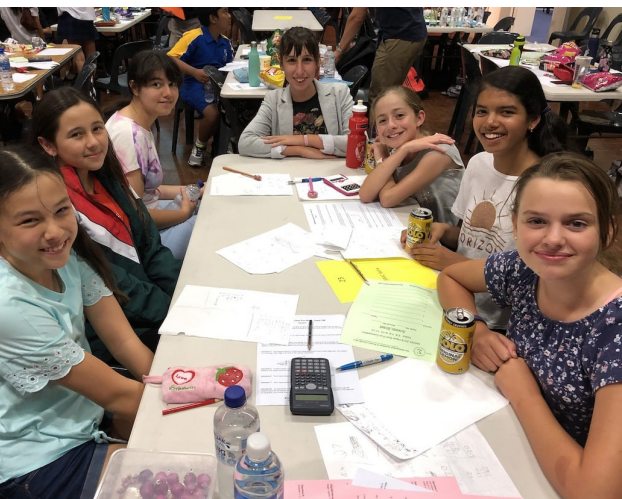




MAWA PROSPECTUS



CONTENTS

Message From the President	4	For WA	
MAWA's History	5	Help Desk	27
What we do	6	Community Involvement	28
MAWA's Vision, Mission and Goals	7		
Meet the people behind the scenes	8	Other	
Life Members	9	Professional Partners	30
Our Patron	9	MAWA Sponsorship Opportunities	33
Membership Options	10	Advertising with MAWA	34
		Why Engage with MAWA?	35
For Students			
Maths Talent Quest	11		
Have Sum Fun Face-to-Face	12		
Have Sum Fun Online	13		
WA Mathematics Problem Solving Program	14		
WA Maths Summer School	16		
National Mathematics Summer School	17		
Maths: Empowering Girls Day	18		
For Teachers			
Professional Learning	20		
Classroom Corner	21		
WA Annual Maths Conference	22		
Maths Meet	24		
For Families			
Maths Expo	25		
Family Focus	26		

MESSAGE FROM THE PRESIDENT

The Mathematical Association of Western Australia (MAWA) is a not-for-profit organisation whose goal is to improve mathematics education across the state and beyond. Originating as a teacher professional association in 1958, MAWA has grown into a vibrant organisation that provides support for anyone with an interest in mathematics including teachers, parents and students. MAWA works closely with our parent organisation, the Australian Association of Mathematics Teachers (AAMT), and our associates in other states and territories to ensure that WA teachers, parents and students have access to the latest research, resources and world-class professional learning opportunities.

MAWA supports teachers, students and schools by conducting a wide range of student and teacher activities; and by providing access to an extensive professional library of printed/online materials and journals on mathematics teaching, learning and assessment. MAWA contracts a variety of experienced educators to facilitate professional learning opportunities for teachers, including on-site professional learning, mentoring, Maths Meets, and an annual conference that attracts 1000 delegates. For families, MAWA runs an annual mathematics expo, school holiday workshops and mathematics pathway information evenings. We also facilitate an extensive range of student activities, including: Have Sum Fun (Face to Face and Online), the Australian Mathematics Competition (AMC), the National Mathematics Summer School, the Maths Talent Quest and the WA Mathematics Problem Solving Program.

The last 12 months have been a particularly challenging time for Australia and the world. The devastation caused by the bushfires across Australia, followed so closely by the Covid-19 pandemic have dealt punishing blows to many businesses, families and schools across Australia. MAWA has responded to this by providing access to a range of free resources for teachers, parents and students through our website. We have also moved many of our offerings online (such as the WA Mathematics Problem

Solving Program, which currently serves over 370 students) in the interests of ensuring the safety of our staff and students by complying with social distancing regulations.

The Association is run by a Board (who volunteer their time) as well as paid staff comprising an executive officer, corporate manager, a part-time accounts officer and two office associates. The MAWA Board consists of a dedicated group of educators from all sections of the education community. Several committees are then responsible for directing MAWA's operations including memberships, publications, student activities and conferences.

MAWA operations rely on the support of its members and the revenue that it generates from professional learning and the sale of publications. Although we do not normally receive government funding, the government's stimulus package has allowed MAWA to continue to provide our services to our members and the wider community.

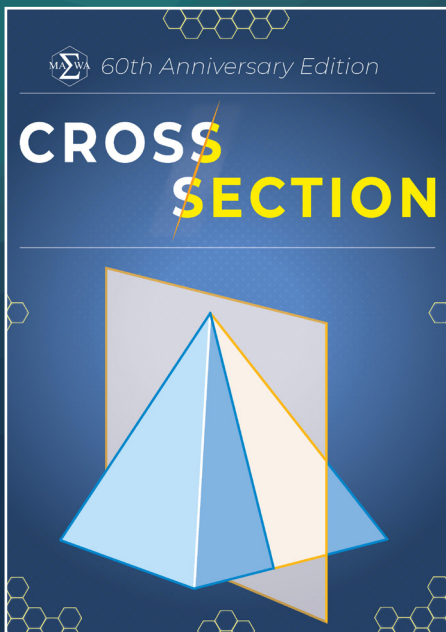
MAWA works closely with a number of partner organisations who share similar goals and support us by providing funding or in-kind support. MAWA works with each of our partners to develop a memorandum of understanding that clearly documents the nature of the relationship between the two organisations. We feel that this approach allows us to build a mutually beneficial partnership with each of our sponsors and maintains transparency and accountability. Please do not hesitate to contact us should you wish to discuss partnership opportunities with us.

- John West

MAWA'S HISTORY



MAWA'S SHOPFRONT



60TH ANNIVERSARY CROSS-SECTION

The first meeting of the Mathematical Association of Western Australia (MAWA) took place on August 6, 1958 in the Physics Lecture Theatre at the University of Western Australia. This occurred as a result of earlier discussions between Mr Frank Gamblen, Professor Larry Blakers, and Mr Ernie Bowen, who was keen to establish a branch of the Mathematical Association (of Great Britain) in Western Australia. As a result of the meeting, Mr Frank Gamblen was appointed as president of a provisional committee that was tasked with the development of a draft constitution and to convene a general meeting of interested persons. This general meeting was subsequently held on February 26, 1959, with Frank Gamblen as chair. As a result of the meeting, the Mathematical Association was informed (by Dr H. Briner, MAWA Secretary) in a letter dated March 10, 1959, that "a West Australian Branch of your association has been formed in Perth". The Australian Association of Mathematics Teachers (AAMT) was founded as a federation of affiliated associations some years later in 1966, in part as a result of the considerable influence of Professor Larry Blakers. MAWA was one of the original affiliated associations, and has remained so until the present day.

FOR TEACHERS, FAMILIES, STUDENTS AND WA

WHAT WE DO

TEACHERS

- » Professional Learning Workshops,
- » Classroom Corner,
- » Resources, Conferences,
- » Professional Advocacy,
- » Communication (**SIGMA**),
- » School Numeracy Improvement Support,
- » Governor's STEM School Awards,
- » MAWA Book Club,
- » MAWA Maths Meets,
- » Support for pre-service teachers.

FAMILIES

- » Maths Expo,
- » Parent Evenings,
- » Maths Pathways Information Evening (**MPIE**),
- » Family Focus,
- » Resources,
- » School holiday workshops,
- » Promotion of opportunities for students and parents (**SIGMA for families**).



STUDENTS

- » Have Some Fun On-Line (**HSFOL**),
- » Have Some Fun Face-to-Face (**HSFF2F**),
- » Western Australian Maths Problem Solving Program (**WAMPSP**) and WAMPSP Scholarships,
- » WA Maths Summer School (**WAMSS**),
- » National Maths Summer School (**NMSS**),
- » Maths Talent Quest (**MTQ**),
- » Sponsorship of WAJO,
- » School Sponsorship for International Mathematics Competitions,
- » Maths Empowering Girls Day (**MEGD**).

WA

- » Memberships and helpdesk,
- » Online resources and activities,
- » Involvement with other professional organisations,
- » Social media communities.

MAWA'S VISION, MISSION AND GOALS



Vision

A Western Australian community that understands and values mathematics.
For Teachers, For Students, For Families, For WA.



Mission

To provide leadership for improving the quality of mathematics education
across Western Australia.



Strategic Goals 2020-2024

1. Advocate for quality mathematics education by engaging with an increasing membership base, key stakeholders and the wider community.
2. Encourage and support schools and families to actively promote student engagement with a range of student activities.
3. Support mathematical professional learning communities across Western Australia to build capacity by providing high quality resources and professional learning opportunities.
4. Streamline and improve governance, management and operations.

MEET THE PEOPLE BEHIND THE SCENES

BOARD

President	Treasurer	Executive Officer
John West	Rom Cirillo	Paula McMahon

DIRECTORS

Board Directors							
Dion Alfonsi	Jack Bana	Rob Berwick	Donna Buckley	Wendy Pero	Lesley Stoffels	Rachel Theunissen	Rachael Whitney-Smith

COMMITTEES

Executive	Finance	Student Activities	Conference	Memberships	Resource and Marketing
John West	John West	Jack Bana	Wendy Pero	Shannon Taylor	Shannon Taylor
Rom Cirillo	Rom Cirillo	Donna Buckley	Lesley Stoffels	Tanya Condo	Rachael Whitney-Smith
Paula McMahon	Paula McMahon	Rachel Theunissen	Colette Miranda		Donna Buckley
Shannon Taylor	Mario Ravat	Paula McMahon	Chen Wang		Dion Alfonsi
	Shannon Taylor	Rob Berwick	Trish Paxton		Holly Hughes
		Zaynep Kaya	Shannon Taylor		Rob Berwick
		Holly Hughes			

STAFF

Executive Officer	Corporate Manager	Office Associates	Accounts Adviser
Paula McMahon	Shannon Taylor	Holly Hughes	Mario Ravat
		Tanya Condo	

LIFE MEMBERS

Life Members	
Lorraine Day (2018)	Barry Bastow (1996)
Greg Hurn (2017)	Barry Kissane (1994)
Rom Cirillo (2017)	Jim Claffey (1994)
Paula McMahon (2016)	David Buck (1994)*
Paul Swan (2015)	Jack Bana (1994)
Michelle Ostberg (2015)	Bob McCreddin (1990)*
Richard Korbosky (2015)	Norm Hoffman (1980)
Mark Graber (2011)	John Greenway (1976)*
Sheila Byfield (2006)	Bobby Coghlan (1974)*
Ray Leeman (2005)	Beryl Hume (1972)
Thelma Perso (2003)	Frank Gamblen (1969)*
Jillian Neale (2002)	Larry Blakers (1968)*
Fran Ciupryk (2000)	Cletus Oakley (1965)*
Jill Hughes (1996)	*deceased



60TH ANNIVERSARY DINNER

OUR PATRON

Cheryl Praeger AM FAA is Emeritus Professor of Mathematics at the University of Western Australia and was foundation Director of UWA's Centre for Mathematics of Symmetry and Computation.



CHERYL PRAEGER

She works on the mathematics of symmetry, exploiting deep theory about the finite simple groups to solve group theoretic, combinatorial, geometric, and computational problems. Educated in Brisbane, Australia, she completed her doctorate at St Anne's College, Oxford. She is a passionate supporter and mentor of students and young scientists, especially women, having been a pioneer for women in mathematics, including as the first female president of the Australian Mathematical Society and only the second female mathematics professorial appointment in Australia. She is the first mathematician to be inducted into the Western Australian Science Hall of Fame, and in 2019 she became the first Western Australian and first pure mathematician to receive the Prime Minister's Prize for Science. <https://youtu.be/Gb5w2v5iqTY>

MEMBERSHIP OPTIONS

We have a membership to suit your situation.

INDIVIDUAL MEMBERSHIPS

- » Student Teacher,
- » Educator / Teacher,
- » Concessional / Retired Teacher,
- » Family,
- » Reciprocal.

INSTITUTIONAL MEMBERSHIPS

- » Institutional (K-12),
- » Primary,
- » Secondary,
- » Business / Company,
- » University / TAFE.

There are a variety of benefits to being a MAWA member!

MEMBERSHIP BENEFITS

- » Membership of The Australian Association of Mathematics Teachers (AAMT)¹.
 - » 10% discount storewide excluding downloadable resources².
 - » Member rates for professional learning workshop and conference.
 - » Member rate for student activities.
 - » Curriculum support.
 - » Access to MAWA library.
 - » Free Classroom Corner and Maths Meets.
 - » Welcome Pack.
- ¹ - Does not apply to Reciprocal or Family Memberships.
² - Does not apply to any Institutional Memberships.



PERCENT INCREASES IN TYPES OF MEMBERSHIPS AND OVERALL MEMBERSHIPS

MAWA Memberships	Individual	Student	Institutional	Life	Exhibitor / Business	Family	Reciprocal	Total
2018 - 2019	148	469	187	20	3	230	1	1057

MEMBERSHIP DATA

FOR STUDENTS

MATHS TALENT QUEST

MAWA re-introduced Maths Talent Quest in 2017 to provide an opportunity to WA students from Kindergarten to Year 12 to work as a mathematician would on a problem of their own choice. This is the only mathematics-based competition that allows individual, group and whole class entries. Through the lens of mathematics, Maths Talent Quest focuses on the higher order skills, also known as the 21st century skills. Communication, teamwork, ethical understanding, critical and creative thinking are all essential elements for success in this competition.

This activity allows teachers to explore the mathematical and statistical thinking processes with their students. This provides students the opportunity to experience how mathematics is used to problem solve in the work place and wider community.

MTQ Event Sponsor: \$6,000

- Naming rights to the event for one year.
- Logo included on all promotional and advertising materials.
- Logo included on all certificates.
- Sponsorship of prizes for High Distinction and Distinction award recipients.
- Banners displayed during judging week and at the presentation ceremony.
- Opportunity to speak at the presentation ceremony and present awards.
- Acknowledgement of sponsorship in our e-newsletter SIGMA, circulation approximately 9000, and MAWA Annual Report.

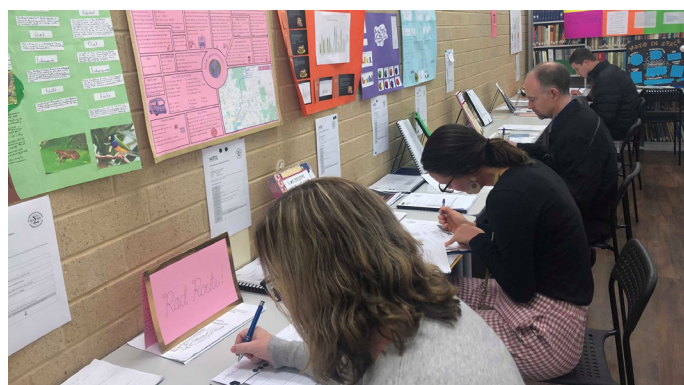
Rural Outreach Sponsor: \$6,000

- Supporting rural and remote teachers to engage their students with this STEM-related competition through face-to-face mentoring in the Kimberley, Pilbara and Gascoyne regions.

Since commencing the number of entries has steadily grown from 46 in 2017 to over 90 in 2019, this represents over 300 students participating in the state. Prior to State-judging, schools managed the school level competitions and at some secondary schools this represents over 500 entries. An entry from each category for each year level is sent to the national judging. In 2020 the national judging took place in Perth.

It has been noted that girls are getting higher levels of achievement in this activity, notably because of the creative and communicative skills.

Currently our numbers from regional schools are low. MAWA would like to ensure that location is not a barrier to engage with this competition. Member survey data tells us that country teachers would like face-to-face support to establish this opportunity in their school. This could be achieved by MAWA bringing a school and/or regional representative to Perth for a day of professional learning.



MTQ JUDGES



SOME MTQ ENTRIES

FOR STUDENTS

HAVE SUM FUN FACE-TO-FACE

The Have Sum Fun Competition is an exciting mathematics initiative that uses a quiz-night format. Teams of six students race against the clock to solve four intense rounds of eight challenging problems.

This well-attended activity runs in Term 1 each year in various locations throughout the Perth metro area, and in the Peel, Pilbara, South West, and Great Southern regions of WA.

In 2019, there were 15 events run in WA and a total of 325 teams that competed across all competitions. In 2018 we had 307 teams competing across all competitions.

To continue this popular student activity and its expansion into other WA regions we have the following sponsorship opportunities available.

Have Sum Fun Face-to-Face Event Sponsor: \$6,000

- Sponsorship helps cover cost of refreshments and prizes.
- Naming rights to the event eg. <Company Name> Have Sum Fun.
- Your company logo on the Have Sum Fun page on our website.
- Your company logo on certificates for all competition locations .



YEARS 5 - 6 COMPETITION, PEEL REGION



YEARS 7 - 8 COMPETITION, TRINITY COLLEGE



YEARS 9 - 10 COMPETITION,
WOODVALE SECONDARY COLLEGE



YEARS 11 - 12 COMPETITION,
BUNBURY CATHOLIC COLLEGE

FOR STUDENTS

HAVE SUM FUN ONLINE

Endorsed by the Australian Association of Mathematics Teachers (AAMT), Have Sum Fun Online (HSFOL) is designed to foster mathematical problem solving for students in Years 3-10 across Australia. HSFOL has been running for more than 15 years!

The activity will run as follows in 2021:

- Term 1 (Years 5-6)
- Term 2 (Years 5-10)
- Term 3 (Years 3-10)
- Term 4 (Years 3-10)

The expansion of the activity in 2020 to include students at home was very well received.

The activity sees individual students at home or school teams of four students race against the clock to complete each round of the competition. There are three rounds per competition.

In 2018 we had 1137 teams that competed across the 20 team competitions held throughout the year with an increase to 1196 teams competing in 2019.

To help MAWA continue this popular competition and help us expand it further, we would warmly welcome an event sponsor. Details include:

Have Sum Fun Online Event Sponsor: \$5,000

- Sponsorship helps cover cost of prizes
- Your company logo on the Have Sum Fun Online page on our website.
- Your company logo on the Have Sum Fun Online website.
- Your company logo on all certificates for all competitions.



NEW HAVE SOME FUN ONLINE CERTIFICATES

FOR STUDENTS

WA MATHEMATICS PROBLEM SOLVING PROGRAM



WAMPSP BADGE PRESENTATION

The WA Mathematics Problem Solving Program (WAMPSP) has been in operation since 1992, during which time more than 3000 students have participated in the program. Dr Nathan (Norm) Hoffman was the founder of this unique program and it has been under the management of MAWA since 2016. The year-long program operates after school during term-time and provides mathematics problem-solving classes for students (aged 10 to 15) who are passionate and enthusiastic about mathematics. The program offers classes at five different levels and until 2019 the program was held at the University of Western Australia.

Prior to 2019 WAMPSP was only available to students residing in Perth. A pilot program, in late 2019, saw the first online classes. In 2019 enrolments were 262 students, 15 from regional WA, with 57% male and 43% female. In 2020 the number of enrolments increased to 365 students, with 36 from regional WA. This represents approximately a 40% increase in student numbers. We have also been able to increase the number of online classes and expand the face-to-face venues in Joondalup and Bunbury.

All students participate in mathematics competitions managed by The Australian Maths Trust (AMT). To recognise student achievements two presentation ceremonies are held each year. At the December presentation students who have been with the program for four or five years are presented a 4- or 5- year badge.

MAWA has established a partnership with AMT. This partnership provides in-kind support for teaching materials and financial support to assist in removing barriers for parents and students by lowering student registration costs. The AMT sponsorship is to the value of \$60 000 per annum. This includes five scholarships, valued at \$500 each, for students from lower ISCEA and/or regional schools.

In recognition of Dr. Nathan Hoffman's many years of involvement with the program the MAWA Board supported the establishment of the WAMPSP Hoffman Scholarships. These scholarships recognise outstanding involvement in mathematics at school and in the community for primary and secondary students. Each is

valued at \$500.

Our future expansion plans including offering a face-to-face venue in the Peel region and other major regional areas of Western Australia. As the program grows additional online classes will be added. In 2020 we conducted a small pilot program in Queensland for regional students. We plan to expand the online offerings in Queensland and to students in other states, mainly Northern Territory, Tasmania and South Australia. As the program expands there will be a need for additional teaching staff who have expertise in delivering online and to mathematically able students.

WAMPSP BADGE PRESENTATION TO STUDENTS IN YEARS 4 - 5



DR JOHN WEST, MAWA PRESIDENT & WAMPSP FOUNDER DR NORM HOFFMAN



WAMPSP Online Program Sponsor: \$20,000

This sponsorship will cover the cost of supplying IT to the online teachers, advertising the program in WA and other states and mailing materials to online students.

- Logo included on MAWA website (home page and , WAMPSP information page) and WAMPSP Moodle page (public site).
- Logo included on all promotional and advertising materials.
- Logo on event presentation evening program.
- Banners at the presentation evenings.
- Opportunity to provide guest speaker at a presentation evening (attendance is approximately 300 people).
- Acknowledgement of sponsorship in our e-newsletter SIGMA, circulation approximately 9000, and MAWA Annual Report.
- Acknowledgement in reports to Australian Maths Trust.

FOR STUDENTS

WA MATHS SUMMER SCHOOL



GETTING TO KNOW YOU ACTIVITY (NMSS)



ORIENTATION ADDRESS BY DAVID STEKETEE (NMSS)

The WA Maths Summer School (WAMSS) was established more than 40 years ago. Due to students declining interest in STEM subjects we were unable to continue. In 2018 we saw a record number of students apply for National Maths Summer School (NMSS) which prompted discussions between MAWA and mathematics faculty of UWA, to reintroduce the WAMSS.

WAMSS is designed for Year 11 students who are not selected for NMSS, to engage in a university experience that involves exploring mathematics at the highest level. Much like NMSS, WAMSS is a residentially based week-long program that is open to both metro and regional students. Included in the program are opportunities for students to explore 21st century skills and visit organisations that involve STEM-related careers.

WAMSS Sponsor: \$2,500

- Your logo on the certificates.
- Your logo on our WAMSS webpage.
- Provide students with shirts with your logo.
- Invitation to the opening event and to address attendees with banner displayed.
- Acknowledgement of sponsorship in our e-newsletter SIGMA, circulation approximately 9000, and MAWA Annual Report.

WAMSS Regional Students Sponsor: \$5,000

- Support travel costs for regional students.
- Your logo on our WAMSS webpage.
- Invitation to the opening event and to address attendees with banner displayed.
- Acknowledgement of sponsorship in our e-newsletter SIGMA, circulation approximately 9000, and MAWA Annual Report.

FOR STUDENTS

NATIONAL MATHEMATICS SUMMER SCHOOL



SELECTED STUDENTS WITH PAUL BROWN AND JACK BANA

The National Mathematics Summer School (NMSS) is a program for the discovery and development of mathematically gifted and talented students who will be studying in Year 12 next year. It is a two-week residential summer course held each January at the Australian National University (ANU) in Canberra.

Up to seven candidates will be selected from Western Australia. Students will be working with mathematicians in several branches of mathematics at a relatively advanced level. They attend tutorials under the guidance of a range of staff – postgraduate students, mathematics teachers and academic mathematicians.

The main activity of NMSS is an in-depth study of three or four different areas of mathematics. Each is very challenging and will extend every student. On the other hand, the program is non-competitive and very much hands-on. The emphasis is on doing mathematics, not just on listening to someone else talking about it.

By the end of the two weeks, most students are amazed at how much they have accomplished, and post-school surveys indicate that the NMSS has succeeded in extending their intellectual horizons. Almost everyone

returns home with a considerably enhanced view of their own potential.

For WA students, the cost of the two-week residential NMSS will be approximately \$1300, plus the cost of subsidised return flights to Canberra of approximately \$450.

NMSS WA Candidates Sponsor: \$10,000

- Your logo on the certificates.
- Your logo on our NMSS webpage.
- Provide students with shirts with your logo.
- Invitation to the orientation event and to address attendees with banner displayed.
- Acknowledgement of sponsorship in our e-newsletter SIGMA, circulation approximately 4000, and MAWA Annual Report.
- Article, written by MAWA, to be provided to candidates' schools with request to include in school newsletter.

FOR STUDENTS

MATHS: EMPOWERING GIRLS DAY



MATHS EMPOWERING GIRLS DAY

An annual MATHS: Empowering Girls Day is a result of research into the number of girls selecting higher level maths in secondary schools and universities. Hosting an event for Year 9 girls to explore STEM careers was the idea of a former Penrhos College Maths Mentor Captain. Now MAWA and Penrhos College enjoy an in-kind partnership for co-hosting the day.

The first event was held in 2018 at Penrhos College with 150 Year 9 girls from 14 schools. In 2019 the event was held at Edith Cowan University, Mount Lawley with 240 students from 19 schools, including Toodyay DHS and Australind SHS.

MATHS: Empowering Girls Day has become a regular event on the MAWA and ECU calendar. Interest has been shown to conduct a similar event in Bunbury to support schools in the south-west region. With ECU sponsorship for the venues we have been able to minimise costs to schools and students. Each year this event costs MAWA about \$10 000 to conduct in Perth and a similar amount to present the event in Bunbury.



SPONSORS AND PARTNERS - TEXAS INSTRUMENTS, PENRHOS COLLEGE, EDITH COWAN UNIVERSITY

MEGD Event Sponsor (Metro or Regional): \$6,000

- Naming rights to the event for one year.
- Logo included on all promotional and advertising materials.
- Logo on event program.
- Banners at the event.
- Opportunity to provide keynote speaker, conduct a student workshop or provide a professional for the "speed dating a professional" session.
- Acknowledgement of sponsorship in our e-newsletter SIGMA, circulation approximately 9000, and MAWA Annual Report.
- Article, written by ECU, to be included in ECU newsletter. Circulation to all partner schools and staff.

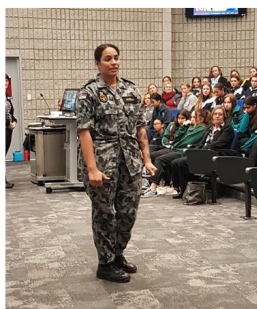
MEGD Keynote Speaker Sponsor: \$500 Per Keynote

- Logo on event program – associated with keynote information.
- Banner at the keynote.
- Opportunity to conduct a student workshop or provide a professional for the "speed dating a professional" session.
- Acknowledgement of sponsorship in our e-newsletter SIGMA, circulation.

MEGD Event Shirt Sponsor: \$4,500

- Logo on event program.
- Logo, single colour only, on sleeve of event shirt (all girls receive a shirt).
- Opportunity to conduct a student workshop or provide a professional for the "speed dating a professional" session.
- Acknowledgement of sponsorship in our e-newsletter SIGMA, circulation approximately 9000, and MAWA Annual Report.

MEG DAY
SPEAKERS



MEG DAY
STATISTICS



245
YEAR 9 GIRLS



19
SCHOOLS



12
WORKSHOPS



24
SPEED DATERS

TOODYAY DHS - TI SPONSORSHIP WINNERS



AUSTRALIND SHS

FOR TEACHERS

PROFESSIONAL LEARNING

Professional learning is a vital part to the ongoing upskilling of teachers. MAWA is seen as one of the key providers of mathematics professional learning in Western Australia. We engage with presenters from universities, different education sectors, other state mathematics associations and MAWA life members. The range of topics covered is vast. However, all presenters share our philosophy that mathematics is taught for understanding using a hands-on problem-solving approach. More than 50 workshops were held in 2019 with attendance often exceeding 25 people per workshop.

Given the geographical distance from Perth many schools are unable to access face-to-face professional learning. MAWA has begun to address this issue by offering live virtual workshops, webcasts and sending presenters to regional locations.

To ensure the highest quality experience when engaging with live virtual workshops and webcasts MAWA has endeavoured to engage professionals in the field of IT. This has proven to be quite an expensive avenue.

We are wanting to expand our professional learning services to regional schools using a model of sending a presenter to a regional area for five days. The services offered would include multiple teacher workshops (including materials), in-school observation lessons, curriculum planning and support, parent workshops and student activities. We are planning to call this full-service consultancy package 'MAWA goes country.'

MAWA Goes Country Sponsor: \$5,000 - \$10,000

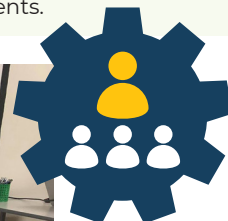
- Naming rights to the event.
- Logo included on all promotional and advertising materials.
- Logo on all event programs.
- Banners at all the events.
- Logo on facilitator's PowerPoint slides
- Opportunity to provide a 5-minute promotional video to be played at all events.
- Acknowledgement of sponsorship in our e-newsletter SIGMA, circulation approximately 9000, and MAWA Annual Report.
- Request, made by MAWA to local paper to include article about student activity or parent workshop.
- Request, made by MAWA to school, to include article in school newsletter and/or website.

MAWA PL Workshops for Individual Teachers: \$500

- Logo included on all promotional and advertising materials.
- Logo on facilitator's PowerPoint slides.
- Opportunity to provide a 5-minute promotional video to be played at all events.
- Acknowledgement of sponsorship in our e-newsletter SIGMA, circulation approximately 9000, and MAWA Annual Report.

MAWA Live Virtual Workshop and Webcast (Max 60-min): \$5,000

- Logo included on all promotional and advertising materials.
- Logo on screen during live virtual workshop.
- Logo added to webcast (webcast will be added to MAWA webinar library and on-sold in future years).
- Opportunity to provide a 5-minute promotional video to be played at all events.



TEACHERS AT A
PROFESSIONAL
DEVELOPMENT
WORKSHOP

FOR TEACHERS

CLASSROOM CORNER

Classroom Corner is a new initiative in 2020 with a target audience of classroom teachers, education assistants and pre-service teachers. Classroom Corner is an hour workshop that is delivered face-to-face and virtually. The aim of the workshop is to highlight a variety of mathematics games, activities or resources that support best practice. Classroom Corner is offered free to MAWA members as a benefit for membership.

Teachers enjoy the workshop because they are hands on, and they leave with resources to use with their class the next day. The workshop also provides a networking opportunity and professional discussions between attendees.

Classroom Corner Event Sponsor: \$2000

For four Classroom Corner events.

- Naming rights to the events for one year.
- Logo included on all promotional and advertising materials.
- Logo on facilitator's PowerPoint slides.
- Banners at the event (logo added to virtual background for virtual).
- Opportunity to provide a 5-minute promotional video to be played at all events.
- Acknowledgement of sponsorship in our e-newsletter SIGMA, circulation approximately 9000, and MAWA Annual Report.



FOR TEACHERS

WA ANNUAL MATHS CONFERENCE

Our annual mathematics conference has an extensive history of more than 40 years with secondary teachers and more recently primary teachers. The conference has proven to be the #1 professional learning opportunity for mathematics teachers in WA. In 2020 we expanded our conference to cater for post-secondary educators.

MAWA has hosted our annual conference at the Crown Convention Centre Perth since 2018 due to the conference outgrowing any other potential venue in Perth. Due to the size of our state and the geographical challenges our remote and regional teachers face, MAWA began hosting the annual conference as a hybrid conference from 2020. This allowed MAWA to offer both face-to-face and virtual options not only to WA educators but to educators everywhere!

Over recent years we have seen a steady increase in the growth of delegates attending and exhibitors supporting the conference. In 2019 we had record numbers of delegates attend across the three days – Monday 516, Tuesday 432 and Wednesday 137. We had a record 34 exhibitors support our conference too!



EXHIBITION HALL

Platinum Sponsorship (1 available): \$25,000

- Sponsor 1 pre-service teacher from each of WA's five universities.
- To attend the conference together with a sponsorship certificate and media/photo opportunity.
- Exhibit space for the entire event (3 days).
- Logo on all conference promo materials, in conference booklet and on our conference website.
- Logo on our website sponsors' page that links to your website.
- Full page ad in conference booklet.
- Flyer in conference bag.
- Complimentary pass to the sundowner, per representative, each day of the conference.
- Sponsor two regional/remote schools to allow complimentary access to the live streamed keynote presentation.
- Logo displayed at the start of all live streamed presentations.
- Opportunity for a 60 second commercial to be aired prior to keynote presentation (to be provided by sponsor).
- Logo included in outro for all recorded virtual sessions.
- Post-conference exposure through sales of recorded keynote presentation to MAWA non-members & complimentary access to MAWA members, including commercial and logo/banner display.



MAWA STAND

Gold Sponsorship (2 available): \$10,000

- Includes Keynote Sponsorship valued at \$2,500.
- Introduce the keynote speaker on the day and brief, 3-minute pitch on that day.
- Logo on all conference material where the keynote is mentioned.
- Flyer on every seat.
- Exhibit space for entire event (3 days).
- Opportunity to present a commercial session on each day excluding HoLA Day.
- Logo on all conference promo materials, in conference booklet and on our conference website.
- Logo on our website sponsors page that links to your website.
- Half page ad in conference booklet.
- Flyer in conference bag.
- Complimentary pass to the sundowner, per representative, each day of the conference.
- Naming rights for a networking sundowner excluding HoLA Day.
- Logo included in outro for all recorded virtual sessions.
- Post-conference exposure through sales of recorded keynote presentation to MAWA non-members & complimentary access to keynote recording for MAWA members.

Silver Sponsorship: \$5,000

- Exhibit space for entire event (3 days).
- Opportunity to present a commercial session on one day.
- Logo in conference booklet and on our conference website.
- Flyer in conference bag.
- Half page ad in conference booklet.
- Complimentary pass to the sundowner, per representative, each day of the conference.
- Logo included in outro for all recorded virtual sessions.

Virtual Silver Sponsorship: (16 available): \$5,000

Virtual recorded session sponsorship with the following inclusions:

- Logo or banner displayed during live streamed session presentation.
- Opportunity for a 45-second commercial to be aired prior to session presentation (to be provided by sponsor).
- Logo included in outro for all recorded virtual sessions.
- Post-conference exposure through sales of recorded session presentation.
- Logo in conference booklet and on our conference website.
- Flyer in conference bag.

Virtual Session Sponsorship: (8 available) \$1,000

Virtual session sponsorship with the following inclusions:

- Logo or banner displayed during live streamed session presentation.
- Opportunity for a 30-second commercial to be aired prior to session presentation (to be provided by sponsor).
- Logo included in outro for all recorded virtual sessions.
- Logo in conference booklet and on our conference website.
- Flyer in conference bag.

Trade Sponsorship: 1 day - \$850 2 days - \$1,700 3 days - \$2,250

- Exhibit space.
- Logo in conference booklet and on our conference website.
- Flyer in conference bag.
- Complimentary pass to the sundowner, per representative, each day of the conference.
- Logo included in outro for all recorded virtual sessions.

FOR TEACHERS

MATHS MEET

Introduced in 2019, the MAWA Maths Meet provides a networking opportunity for educators in a relaxed and informal setting. Each meet we have a special guest who shares with attendees a few tips and tricks they have found useful throughout their teaching careers, often also sharing an activity that can be used in the classroom the next day. We feel these meets could be quite valuable for pre-service teachers.

The meets are free and MAWA provides a complimentary beverage of choice to all attendees.



SOME MATHS MEET ATTENDEES



FOR FAMILIES

MATHS EXPO

Our first ever Maths Expo was held in 2019 at the Crown Convention Centre where we welcomed over 200 families for a fun-filled day of maths!

The Maths Expo is designed to showcase interactive maths resources that help support mathematics education in the home.

We had an exhibitor passport that encouraged families to visit each of the exhibits to learn about what they had to offer and receive a stamp on their passport.

In 2020 the event saw a significant drop in numbers due to COVID-19 although registered interest far exceeded our previous year's numbers which is an encouraging sign for future years.

We are confident that the Maths Expo is an important and valuable inclusion on the MAWA calendar and are excited to see it grow in future years.

Maths Expo Sponsorship Options:

- Pamphlet on Pamphlet Table: \$100
- Trade Display: \$200
- Event Sponsorship (**1 available**): \$500

Inclusions: Exhibit, logo on promotional materials, logo on MAWA's Sponsors' webpage, email to all attendees that complete their Expo Passport promoting your business.



EXPO ATTENDEES PARTICIPATING AND LEARNING



FOR FAMILIES

FAMILY FOCUS



Family Focus is another new initiative for 2020 with a target audience of parents and families who want to learn more about how they can support their children's mathematics education at home. Family Focus sessions are conducted once per term in the form of a one-hour face-to-face and/or virtual workshop. The aim of the workshops is to highlight a variety of mathematics games, activities or resources that people without an educational background can use to support students' mathematics learning. Family Focus sessions are offered free to MAWA family members as a member benefit.

Many parents and families are unsure what they can do to support their children's engagement and enjoyment of mathematics. These sessions provide reassurance that many everyday activities (such as shopping, puzzles, board and card games) can be used to stimulate mathematical learning. All participants receive a copy of the focus resource to take home at the end of the session. The workshops also provide a social networking opportunity for parents and families.

Family Focus Event Sponsor: \$2,000

For four Family Focus events.

- Naming rights to the events for one year.
- Logo included on all promotional and advertising materials.
- Logo on facilitator's PowerPoint slides.
- Banners at the event (logo added to virtual background for virtual).
- Opportunity to provide a 5-minute promotional video to be played at all events.
- Acknowledgement of sponsorship in our e-newsletter SIGMA, circulation approximately 4000, and MAWA Annual Report.

FOR WA

HELP DESK

MAWA has developed a Helpdesk, aimed to assist teachers and parents with any questions in regard to mathematics education and learning. If you have a question about mathematics education, the curriculum, available resources for enrichment, remedial resources or even ideas and resources to make maths fun, feel free to email the helpdesk helpdesk@mawainc.org.au.

Please include in your email what area suits your query best; i.e., Early Childhood Education (K-1), Primary Mathematics Years 2-3, Primary Mathematics Years 4-6, Secondary Mathematics Years 7-9, Secondary Mathematics Year 10, Secondary Mathematics Years 11-12, non-ATAR, ATAR Mathematics.

This inbox will be checked once a day and your email will be forwarded to one of our many mathematics experts, who will respond to your email within 5 business days. Please allow the full 5 business days before calling the MAWA office.



Email the helpdesk at
helpdesk@mawainc.org.au

THE MATHS STORE

MAWA offers a wide range of resources, games and hands-on manipulatives for teachers, parents and students.

Please visit our online shop, The Maths Store.



FOR WA

COMMUNITY INVOLVEMENT

MAWA Supports and Sponsors the following:

Maths Active School

The Maths Active School Program enables schools to demonstrate that they actively extend students and teachers beyond the normal mathematics classroom. MAWA believes that such schools deserve recognition at a time when the school culture has become more competitive and parents are looking to “Myschool” and other metrics for comparing schools. The scheme is recognised by the Australian Association of Mathematics Teachers.

Schools are recognised at one of three award “levels” – Bronze, Silver and Gold. The awards are based on criteria which MAWA has published and distributed to all Western Australian schools. The application process is free of charge – schools need to provide evidence that they have met the criteria during the previous school year.

MAWA will issue a certificate to the school and provide an official copy of the current year’s Maths Active Logo which the school can display on its website. MAWA will also advertise on its website that the school is a Maths Active School.



Pre-Service Teacher Awards



MAWA sponsors Pre-Service Teacher Awards at each of the Western Australian Universities.

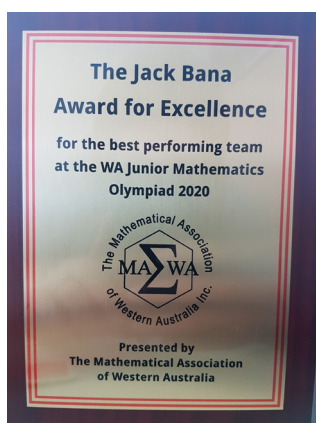
The Pre-Service Teacher Awards are presented to outstanding pre-service mathematics students in Early Childhood, Primary and Secondary fields of study.

Students are expected to have high achievement in their mathematics coursework and are also expected to provide leadership and advocacy for mathematics education.

Each award is valued at \$500, including a certificate presented at your institution’s awards ceremony, individual MAWA membership for one-year, free day registration at the next MAWA Conference, plus a pack of resources.

WA Maths Olympiad

MAWA proudly continues to sponsor WAJO by providing the Jack Bana Award to the top-performing WAJO team, as well as gift vouchers of \$100 to each of the four team members.



The STEM Consortium

The STEM Education Consortium is a collaboration between the Educational Computing Association of WA (ECAWA), the Mathematical Association of WA (MAWA), the Science Teachers Association of WA (STAWA) and Scitech.

The Consortium aims to provide leadership and support to promote STEM education to all Western Australian schools. Consortium Initiatives include: STEM Education Conference, STEM Learning Project and Out-of-field Teachers.



Governor's School STEM Awards

MAWA provides experienced educators as members of the judging panel for these awards.

The Governor's School STEM Awards (the Awards) is an annual awards program overseen by the Department of Jobs, Tourism, Science and Innovation and administered by Scitech. The Awards recognise and celebrate Western Australian primary and secondary schools that demonstrate excellence in leadership, advocacy, engagement and achievements in Science, Technology, Engineering and Mathematics (STEM) education.

The Awards support the Government's State STEM skills strategy by highlighting the importance of developing a whole-of-school STEM culture where STEM learning is embraced by the school principal, leadership team and teachers with a resulting positive impact on students, parents and the community.



JACK BANA, SHEILA BYFIELD AND GOVERNOR OF WESTERN AUSTRALIA, THE HONOURABLE KIM BEAZLEY AC.

PROFESSIONAL PARTNERS

MAWA is proud of the partnerships we have forged and the ongoing support we receive from our partners. Many of our partnerships are mutually beneficial rather than financial. Without their support MAWA would not be the progressive and dynamic association it is today. Please take the time to get to know our wonderful partners and consider how your organisation may wish to partner with MAWA.



IETPL

Independent Education & Training Pty Ltd
The home of *Número*®



Numerowa



numero.by.ietpl



Número.IETPL



Julie@ietpl.com.au

Independent Education and Training Pty Ltd (IETPL) is a family-based company formed to publish and distribute Número®. Número itself is owned by Alzheimer's WA, with royalties from all products going to this charity. IETPL is owned and operated by Julie Richards, who is the daughter of Número's creator, Frank Drysdale. Julie works to promote and teach the use of Número in classrooms all over Australia, with an emphasis on Western Australia, although it is now being played in a multitude of countries around the world.

Número is a mental maths resource suitable for all years of primary and secondary education. It can play an important role in developing the proficiency strands of the Australian Curriculum Mathematics, especially with fluency, problem solving and reasoning. Número is ideal for introducing and reinforcing both simple and complex maths concepts within a game situation.

Follow Número on Facebook (@Numerowa), Instagram (numero.by.ietpl) or Twitter (Número.IETPL), email enquiries to Julie@ietpl.com.au or visit our website www.numero.org



REVISE ONLINE



reviseonlineAU



reviseonline



revise-online



enquiries
@reviseonline.com

Improve assessment outcomes and ATAR scores for your Years 11 & 12 students using ReviseOnline's unique online revision portal.

From our bank of thousands of WACE specific questions, students generate ATAR standard practice tests and exams, replicating the exam experience and learning from our sample responses and marking keys to maximise scores.

Teachers can monitor student progress, view analytics, determine strengths and weaknesses and provide feedback direct to students from their own Teacher Portals - saving time and better allocating resources to provide help where it's really needed.

You can even deliver your summative assessments via our brand NEW, online, secure Formal Assessment Portal.

www.reviseonline.com



networkteach

To become **FREE** lifetime member simply register via: **networkteachmembership.eventbrite.com.au**

Network Teach is an independent, not for profit and non-political Education Association proudly supporting Western Australia's teachers, trainee teachers, education assistants and school leaders.

Network Teach provides a leading range of free and heavily subsidised professional learning opportunities for its members with an aim to ensure greater accessibility and affordability for the WA education community.

Despite being a full service Education Association, Network Teach continues its tradition of supporting aspiring teachers and is recognised as Australia's leading and largest organisation to support aspiring teachers.

We proudly partner and are sponsored by education-based organisations that assist us to provide our free or heavily subsidised learning opportunities to our members.

www.networkteach.com



**AUSTRALIAN
MATHS TRUST**



AustMathsTrust



austmathstrust



australian-mathematics-trust



www.youtube.com/channel/UCi7KaxJnbraiLB62tQ1now

AMT is a charity that helps teachers with resources and opportunities to enable their students to develop their problem-solving skills.

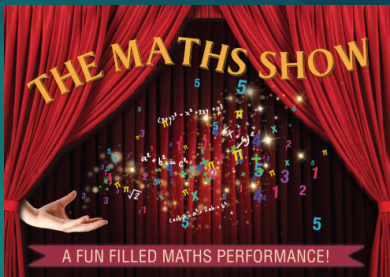
AMT offers annual events, like the internationally recognised Australian Mathematics Competition, and enrichment programs that run over a series of weeks or months.

Other activities help build students' computational and algorithmic thinking and support STEM skill development and the maths and informatics Olympiad pathways offer students an opportunity to achieve excellence at the highest levels.

Problemo is AMT's newest online offering for teachers and is designed to transform the teaching and learning of mathematical problem solving in any classroom. It has a large bank of quality problems per year group, complete with enabling and extending prompts, sample lesson cards and worked solutions.

Developed alongside Australian teachers from across the country, Problemo is the 'go to' place for maths problem solving.

www.amt.edu.au and www.problemo.edu.au



info@felstead.com.au

Have fun with The Maths Show! If you're looking for something fun, engaging and different to do in maths, The Maths Show may be just what you need! The Maths Show is a live performance for students that is:

- **Highly entertaining and lots of fun.**
- **A unique way to build student engagement in maths.**
- **Full of maths history, puzzles, maths magic and more.**
- **A great way to have students see maths from a different perspective. Easy to organise – we come to your school.**
- **Sure to promote maths reasoning and problem solving skills.**

Suitable for Junior Secondary and Primary students. We are available in Perth and regularly tour regional areas. An online/virtual version of the show is also available – especially suitable for remote schools. We are proudly sponsored by MAWA with a 10% discount for members. Perfect for a Maths / STEAM Week or Day or end of year activity. To find out more, contact us today.

Email: info@felstead.com.au

www.felstead.com.au/portfolio/themathsshow/

Phone: 0402 223406

"It was awesome! The performer was engaging and hilarious. The kids loved the show!" - Libby Foley, Chevallum State School



doug@blackdouglas.com.au

Mathematics Centre offers a world of alternatives to text-based learning in the belief that all students can learn to work like a mathematician. Our work is 100% professional development. We support teachers, schools, districts and systems by retelling stories of classroom success in our workshop sessions and through our web site. We also offer a select set of unique resources which, through decades of history, have been directly connected to those success stories. These links will get you started:

Big Picture - bullet point overview of the whole site

mathematicscentre.com/mathematicscentre/bigpict.htm

Site Map - a 'table of contents' in the form of hyperlinks to every key element of the site

mathematicscentre.com/mathematicscentre/sitemap.htm

Resources - stuff you invest in to enhance teaching craft

mathematicscentre.com/taskcentre/resource.htm

Contact - Doug Williams, doug@blackdouglas.com.au, 0401 177 775

MAWA SPONSORSHIP OPPORTUNITIES

MAWA has many sponsors who support a number of our events from our annual conference, our Maths Empowering Girls Day and WAMPSP Program to name a few. As a not-for-profit organisation that receives no government assistance or grants, we really do appreciate our sponsors and their support, as we would not be the growing and vibrant organisation we are today without them. MAWA would like to thank our sponsors for their ongoing support.

MAWA has introduced new initiatives in addition to expanding our existing offerings which has improved the opportunities available for sponsors to be involved with our organisation.

Please take some time to peruse our prospectus which provides details on each of our events and activities, available sponsorship opportunities and their associated investment.

Event Sponsorship Options	Value / Cost	Page Number
MTQ Event Sponsor	\$6,000	15
MTQ Rural Outreach Sponsor	\$6,000	15
Have Sum Fun Face-To-Face Event Sponsor	\$6,000	16
Have Sum Fun Online Event Sponsor	\$5,000	17
WAMPSP Online Program Sponsor	\$20,000	19
WAMSS Sponsor	\$2,500	20
WAMSS Regional Student Sponsor	\$5,000	20
NMSS WA Candidates Sponsor	\$10,000	21
MEGD Event Sponsor (Metro or Regional)	\$6,000	23
MEGD Keynote Speaker Sponsor	\$500 (Per Keynote)	23
MEGD Event Shirt Sponsor	\$4,500	23
MAWA Goes Country Sponsor	\$5,000 - \$10,000	24
MAWA PL Workshops for Individual Teachers	\$500	24
MAWA Live Virtual Workshop and Webcast (Max 60-min)	\$5,000	24
Classroom Corner Event Sponsor	\$2,000	25
Maths Expo Event Sponsor (1 available)	\$500	29
Maths Expo Trade Display Sponsor	\$200	29
Maths Expo Pamphlet Table Sponsor	\$100	29
Family Focus Sponsor	\$2,000	30

Conference Sponsorship Options	Value / Cost	Page Number
Platinum Sponsorship (1 available)	\$25,000	26
Gold Sponsorship (2 available)	\$10,000	27
Silver Sponsorship	\$5,000	27
Virtual Silver Sponsor (16 available)	\$5,000	27
Virtual Session Sponsor (8 available)	\$1,000	27
Trade Sponsorship(s)	\$850 - \$2,250	27

There may be aspects of the above-mentioned sponsorship opportunities that align well with your company's vision, mission and strategies. We would be more than happy to discuss how those aspects can be combined into a customised sponsorship arrangement. Please contact Shannon Taylor manager@mawainc.org.au.

For more information on sponsorship opportunities, please visit mawainc.org.au/sponsorship

ADVERTISING WITH MAWA

Advertising – Direct Mailing Campaigns

We offer direct mailing campaigns to our education database which includes both members and contacts (approximately 9700) for \$600 per campaign.

We also offer direct mailing campaigns to our parent/student database which includes both members and contacts (approximately 1200) for \$350 per campaign.

All mailing campaigns include a complimentary post on our social media platforms.

Advertorial – Sigma and Sigma for Families

Advertising through our quarterly e-newsletters provides an attractive opportunity for advertisers to reach clients and support MAWA.

Sigma - sent to our education database (approx. 9700) for \$350 (inc GST).

Sigma for Families - sent to our parent/student database (approx. 1200) for \$200 (inc GST).

Advertorial Specs

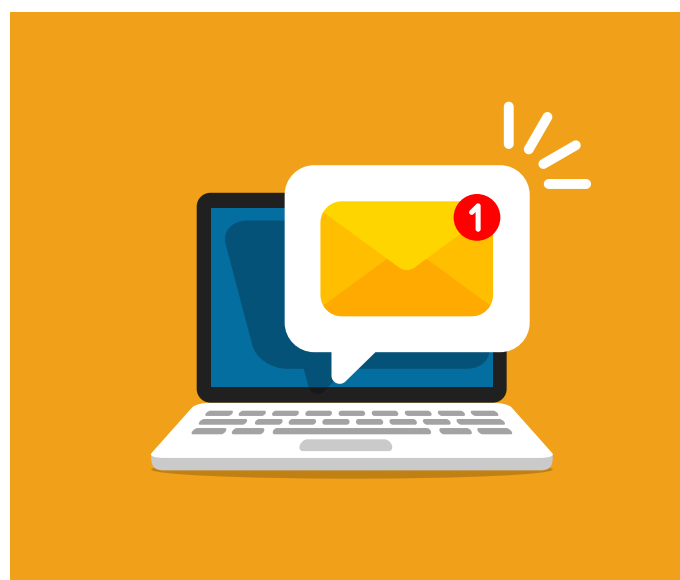
Image banner (approx. 820 x 238 pixels) within the newsletter with your feature article (200 words) below, detailing your offer exclusive to readers, along with a direct link to your website.

When booking your spot, please email all requirements to manager@mawainc.org.au with your preferred e-newsletter and delivery.

The delivery dates for Sigma and Sigma for Families are as listed, along with the deadlines for materials to be received by the MAWA office.

E-Newsletter Delivery and Deadlines

Term	Deadline	Delivery
Term 1	late January	early February
Term 2	late April	early May
Term 3	mid July	late July
Term 4	early October	mid October



Please contact the MAWA Office on (08) 9345 0388 to discuss your needs further.

WHY ENGAGE WITH MAWA?

MAWA is seen to be one of the key providers of professional learning for teachers in Western Australia. We strongly believe, by supporting teachers to provide quality mathematics education, student performance and engagement in mathematics is improved. This creates a flow on effect with more students undertaking study in STEM related upper school subjects.

We have broadened our products and services to provide for early years and primary, and more recently focused on delivering services to families to support mathematics learning at home. This includes the increase in our offerings of student activities across Western Australia and beyond, to ensure we remove any barriers for families associated with living in a regional or remote area.

To ensure that our operations are streamlined, MAWA has carried out a significant upgrade of our IT and operating systems. These upgrades have assisted in maximising staff efficiency in day-to-day processes. Over the past five years MAWA has employed an Executive Officer and increased office staff due to the rapid expansion of our products and services offerings.

In recent times we have worked at establishing strong partnerships with organisations that align with our vision and mission. Many of our partners are small Australian start-up companies and our partnerships agreements are mutually beneficial.

MAWA is committed to providing the highest quality products and services, whilst remaining the progressive and vibrant organisation we have established ourselves to be.

MAWA has achieved much success throughout our 62 years, given we are a not-for-profit organisation that currently receives no government funding. We have many ideas to expand our products and services. However we can only achieve so much with the resources we have currently available to us. MAWA relies on the generosity of partners and sponsors to help promote, grow, and

financially assist us to provide quality mathematics education opportunities to teachers, students and families regardless of where they live in Western Australia.

We thank you for perusing our Prospectus and welcome the opportunity to further discuss your engagement with MAWA.



MAWA PRESIDENT JOHN WEST RECEIVING A DONATION FROM COMMONWEALTH BANK REPRESENTATIVES NEHA DODHIA AND STEPHEN FISHER

Contact Us

ABN: 83 179 618 286

Street: 12 Cobbler Place, Mirrabooka 6061

Postal: P.O. Box 440, Mirrabooka 6941

Phone: 08 9345 0388

Website: www.mawainc.org.au



www.facebook.com/MAWAinc



MAWAinc



@MAWAinc

